

**Stainless Steel Manifold
BW300**

Secondary exchange cooling system

The double heating circulation system presents a solution that ensures optimal functionality and comfort in both central heating and non-central heating periods. This innovative system consists of two independent operating systems: the user's floor heating system and the centralized heat source system.

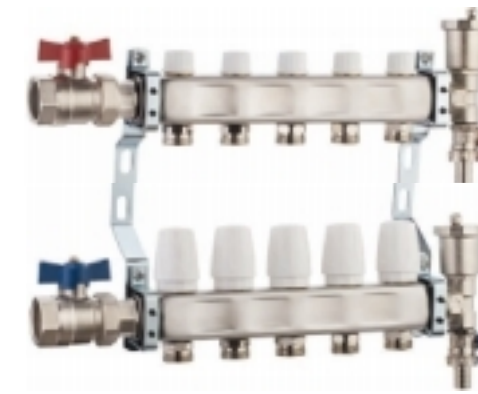
During the central heating period, the system effectively prevents issues such as excessive water pressure from the primary heat source. Additionally, an automatic thermostat feature safeguards against excessive water temperature, thus protecting the secondary floor heating system and maintaining a comfortable room temperature.

When non-central heating is required, users can seamlessly switch to household heating utilizing the same system. By utilizing the household heat source, the central heating inlet and return valves are closed to achieve efficient heating within the household.

In central heating areas, the system offers the flexibility to incorporate separate heat sources, including wall-hung boilers or solar energy, for enhanced heating capabilities. Users can easily transition to central heating mode by activating the separate heat sources and disabling the primary heat source.

With its intelligent design and versatile operation, the double heating circulation system guarantees efficient heating performance, customizable to various heating requirements throughout the year.

BL-B11
Inside valve type stainless steel manifold



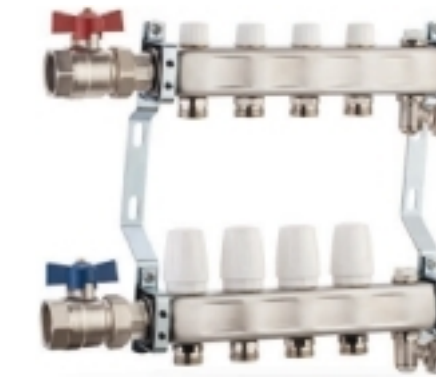
Branch Number	2~13
Max.Work temperature	95°C
Max.Work pressure	1.25Mpa
Distance of branch pipe	50mm
Heigh to main pipe	40.7mm
Length of main pipe	125mm~735mm
Diameter of end	G-1"

BL-B13
Inside valve type stainless steel manifold



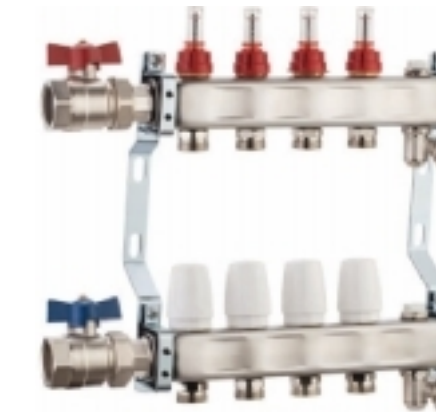
Branch Number	2~13
Max.Work temperature	95°C
Max.Work pressure	1.25Mpa
Distance of branch pipe	50mm
Heigh to main pipe	40.7mm
Length of main pipe	125mm~735mm
Diameter of end	G-1"

BL-B12
Inside valve type stainless steel manifold



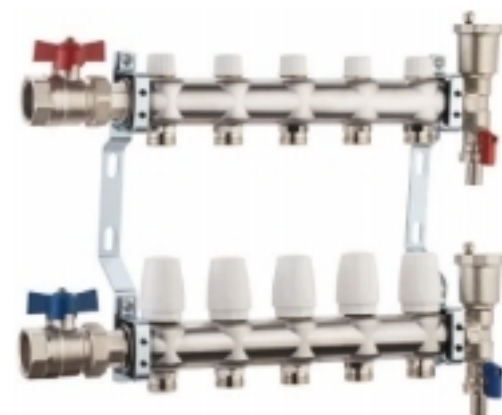
Branch Number	2~13
Max.Work temperature	95°C
Max.Work pressure	1.25Mpa
Distance of branch pipe	50mm
Heigh to main pipe	40.7mm
Length of main pipe	125mm~735mm
Diameter of end	G-1"

BL-B14
Inside valve type stainless steel manifold



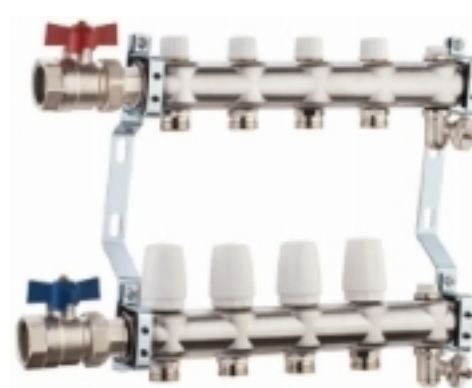
Branch Number	2~13
Max.Work temperature	95°C
Max.Work pressure	1.25Mpa
Distance of branch pipe	50mm
Heigh to main pipe	40.7mm
Length of main pipe	125mm~735mm
Diameter of end	G-1"

BL-C21
Inside valve type stainless steel manifold



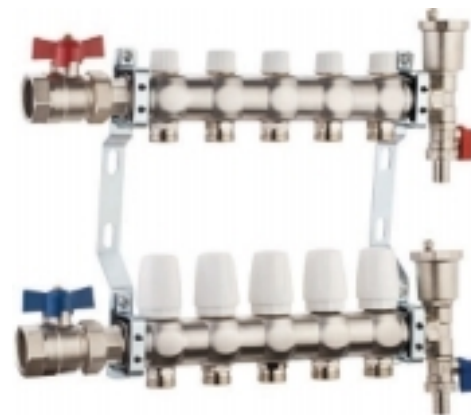
BranchNumber	2~13
Max.Worktemperature	95°C
Max.Workpressure	1.25Mpa
Distanceofbranchpipe	60mm
Heightofmainpipe	40.7mm
Lengthofmainpipe	135mm~925mm
Diameterofend	G-1"

BL-C22
Inside valve type stainless steel manifold



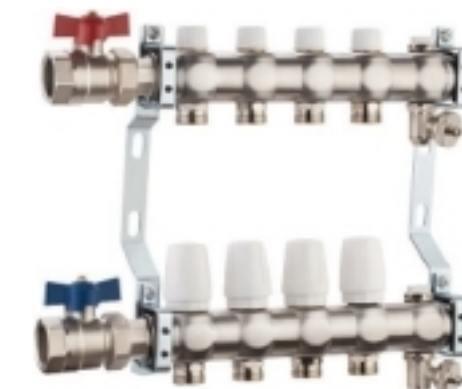
Branch Number	2~13 connections
Max.Work temperature	95°C
Max.Work pressure	1.25Mpa
Distance of branch pipe	60mm
Heigh to main pipe	40.7mm
Length of main pipe	135mm~925mm
Diameter of end	G-1"

BL-D31
Inside valve type stainless steel manifold



BranchNumber	2~13
Max.Worktemperature	95°C
Max.Workpressure	1.25Mpa
Distanceofbranchpipe	50mm
Heightofmainpipe	40mm
Lengthofmainpipe	125mm~735mm
Diameterofend	G-1"

BL-D32
Inside valve type stainless steel manifold



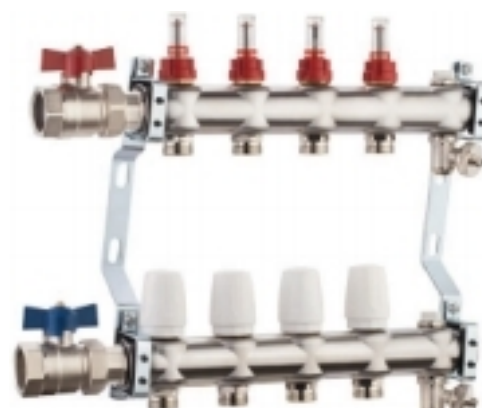
BranchNumber	2~13
Max.Worktemperature	95°C
Max.Workpressure	1.25Mpa
Distanceofbranchpipe	50mm
Heightofmainpipe	40mm
Lengthofmainpipe	125mm~735mm
Diameterofend	G-1"

BL-C23
Inside valve type stainless steel manifold



BranchNumber	2~13
Max.Worktemperature	95°C
Max.Workpressure	1.25Mpa
Distanceofbranchpipe	60mm
Heightofmainpipe	40.7mm
Lengthofmainpipe	135mm~925mm
Diameterofend	G-1"

BL-C24
Inside valve type stainless steel manifold



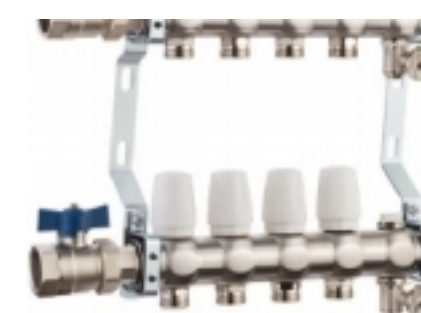
BranchNumber	2~13
Max.Worktemperature	95°C
Max.Workpressure	1.25Mpa
Distanceofbranchpipe	60mm
Heightofmainpipe	40.7mm
Lengthofmainpipe	135mm~925mm
Diameterofend	G-1"

BL-D33
Inside valve type stainless steel manifold

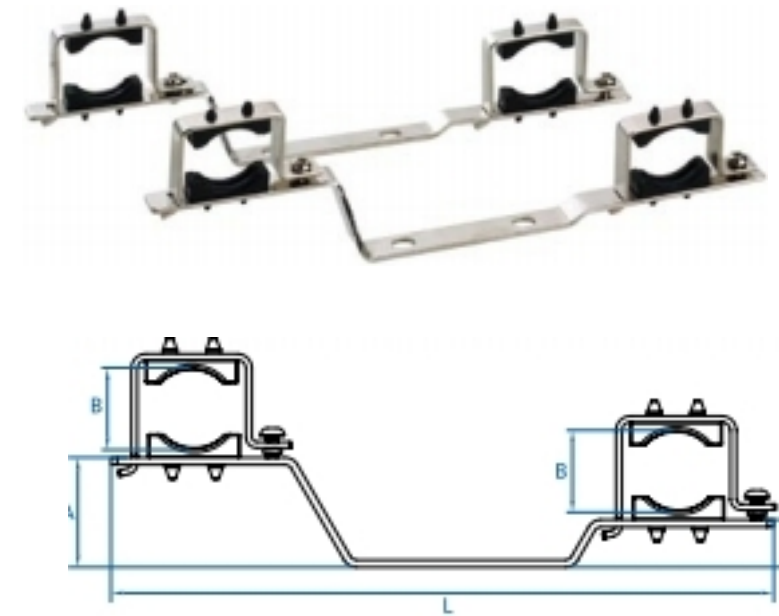


BranchNumber	2~13 环路
Max.Worktemperature	95°C
Max.Workpressure	1.25Mpa
Distanceofbranchpipe	50mm
Heightofmainpipe	40mm
Lengthofmainpipe	125mm~735mm
Diameterofend	G-1"

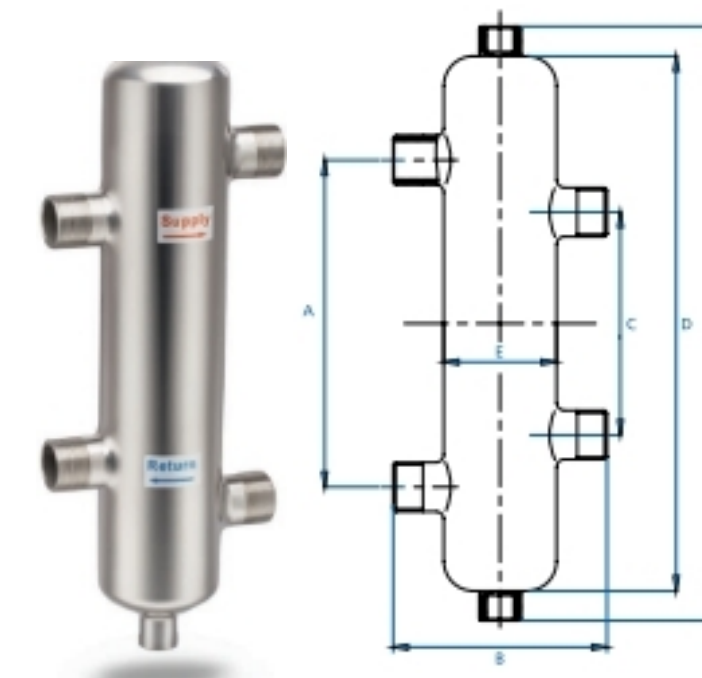
BL-D34
Inside valve type stainless steel manifold



BranchNumber	2~13
Max.Worktemperature	95°C
Max.Workpressure	1.25Mpa
Distanceofbranchpipe	50mm
Heightofmainpipe	40mm
Lengthofmainpipe	125mm~735mm
Diameterofend	G-1"

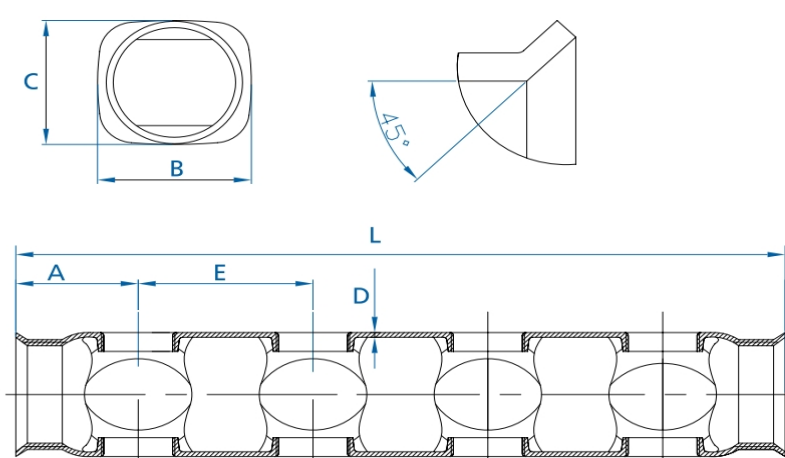


BranchNumber	2~13
Max water temperature	95°C
Max.Work pressure	1.25Mpa
Distance of branch pipe	50mm
Heightofmainpipe	40.7mm
Lengthofmainpipe	125mm~735mm
Diameterofend	G-1"
Diameterofbranchpipe	1/2"



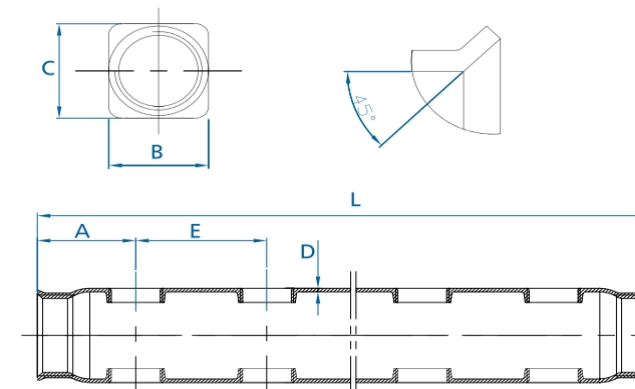
BranchNumber	2~13
Max water temperature	95°C
Max.Work pressure	1.25Mpa
Distance of branch pipe	55mm
Heightofmainpipe	40.7mm/47mm
Lengthofmainpipe	135mm~740
Diameterofend	135mm~740
Diameterofbranchpipe	130~200g
BranchNumber	2~13

Stainless Steel Manifold Bar - YX Type



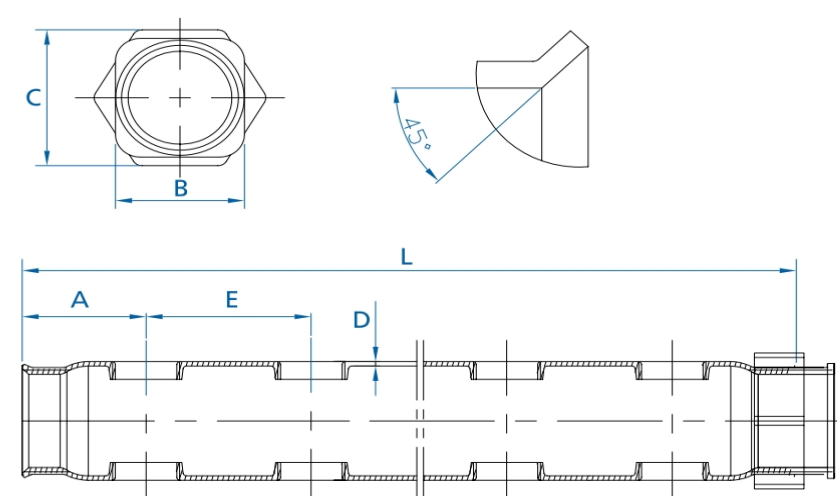
Model #	YX-A1	YX-B2
Material	SUS304	SUS304
Diameter of ends	G-1"	G-1"
Diameter of branches	1/2"	1/2"
Distance between branches	60mm	50mm / 55mm
Gradient of ends	45°	45°
Ways	Length(mm)	
L-2	135	120
L-3	195	170
L-4	255	220
L-5	315	270
L-6	375	320
L-7	435	370
L-8	495	420
L-9	555	470
L-10	615	520
L-11	675	570
L-12	735	620
L-13	795	670
A	34.5	35
B	40	44.5
C	39.5	39.5
D	1.5	1.5

Stainless Steel Manifold Bar - FX Type



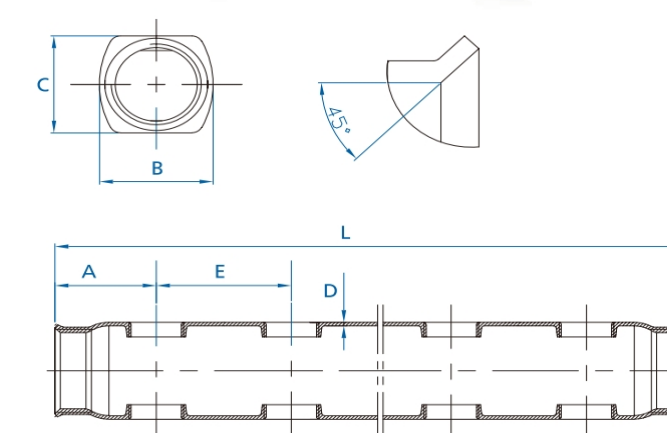
Model #	FX-D1	FX-Z2	FX-X3
Material	SUS304	SUS304	SUS304
Diameter of ends	G-1 1/4"	G-1"	G-1"
Diameter of branches	1/2"	1/2"	1/2"
Distance between branches	50mm	50mm	50mm
Gradient of ends	45°	45°	45°
Ways	Length(mm)		
L-2	125	125	125
L-3	175	175	175
L-4	225	225	225
L-5	275	275	275
L-6	325	325	325
L-7	375	375	375
L-8	425	425	425
L-9	475	475	475
L-10	525	525	525
L-11	575	575	575
L-12	625	625	625
L-13	675	675	675
A	37.5	37.5	37.5
B	48.8	40	40.5
C	50	40.7	36.5
D	1.5	1.5	1.5

Stainless Steel Manifold Bar - HJ Type



Model #	HJ-D1
Material	SUS304
Diameter of ends	G-1" , G-1 1/4"
Diameter of branches	1/2" 3/8"
Distance between branches	50mm / 55mm
Gradient of ends	45° / 90°
Ways	Length(mm)
L-2	135
L-3	185
L-4	235
L-5	285
L-6	335
L-7	385
L-8	435
L-9	485
L-10	535
L-11	585
L-12	635
L-13	685
A	37.2
B	41
C	41
D	1.5

Stainless Steel Manifold Bar - GX Type



Model #	GX-D1	GX-Z2	GX-X3
Material	SUS304	SUS304	SUS304
Diameter of ends	G-1 1/4"	G-1"	G-1"
Diameter of branches	1/2"	1/2"	1/2"
Distance between branches	50mm	50mm	50mm
Gradient of ends	45°	45°	45°
Ways	Length(mm)		
L-2	125	125	125
L-3	175	175	175
L-4	225	225	225
L-5	275	275	275
L-6	325	325	325
L-7	375	375	375
L-8	425	425	425
L-9	475	475	475
L-10	525	525	525
L-11	575	575	575
L-12	625	625	625
L-13	675	675	675
A	37.5	36.5	45
B	47	42.8	41.5
C	47	40.4	36.3
D	1.5	1.5	1.5